

# RESPONSIVE

We listen. We're responsive.

## Canopus®

Anti-Slip - Phthalate Free

2018



## Special Features



CERTIFIED BY SCS Global Services

## Applications

- Transport
- Airports
- Ramps
- Elevated Corridor access
- Lift areas and entrances
- Kitchens or wet areas
- Industrial locations
- Trains
- Ferries

## Product Description

**Canopus®** is an anti-slip flexible floor covering, 2.00 mm thick with silicon carbide crystals and coloured chips for a decorative design combined with R11 slip resistant properties. The product has a wear layer of 1.00 mm and is reinforced with a glass fibre grid for extra dimensional stability.

**The SureClean™** surface treatment replaces wax and polish after installation without reducing the anti-slip properties of the flooring and this provides high ease of maintenance.

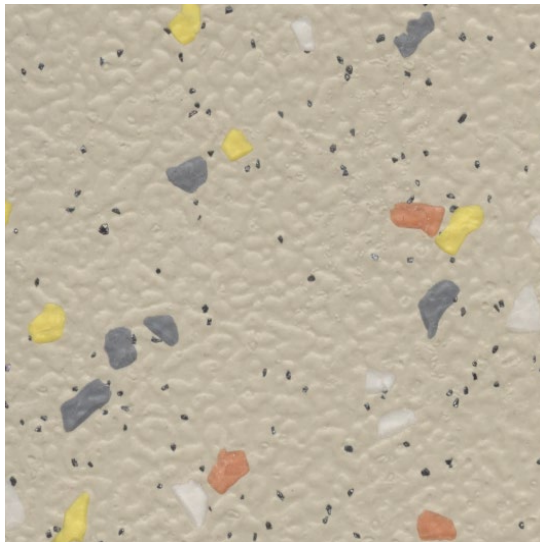
**Canopus®** is antifungal and anti-bacterial, complies with the EN 649 norm (34 - 43) and has a group T wear rating.

**Canopus®** is suitable for transport applications such as buses, trains, ships and airplanes. It is also applicable for non-slip performance in most commercial and industrial areas. It is the ideal solution for heavy traffic applications where enhanced slip resistance, durability, hygiene and aesthetic beauty are required.

**Canopus®** is VOC ( $\leq 12$  Chronic REL) and formaldehyde compliant ( $\leq 9.0 \mu\text{g}/\text{m}^3$ ) according to the CDPH/EHLB/Standard, Method V1.1-2010 (certificate 120316-01).

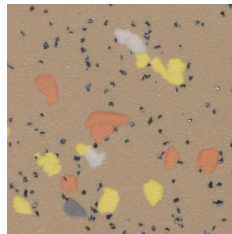
## Get A Grip

Safe, reliable, and attractive, Canopus® is a perennial choice for specifiers. With its orange peel emboss and carborundum construction, Canopus® is widely used in railways, buses, and contract applications. Having an R11 slip rating, Canopus® sets the gold standard for safety products.



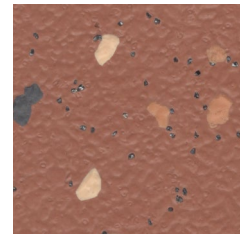
CANO - 01

Flax



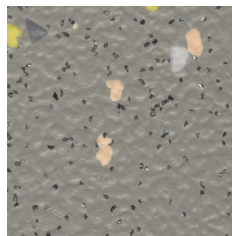
CANO - 02

Sandstorm



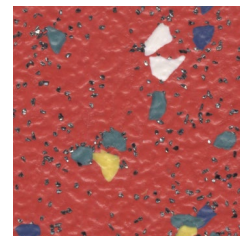
CANO - 04

Rich Tan



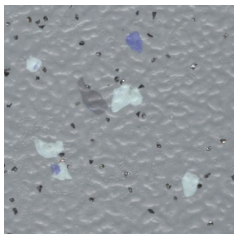
CANO - 03

Washed Steps



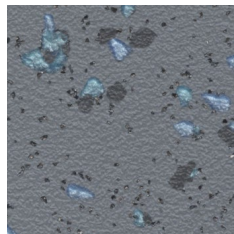
CANO - 05

Volcano



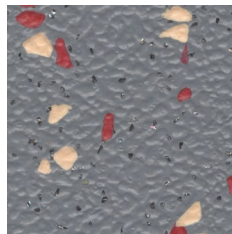
CANO - 07

December Frost



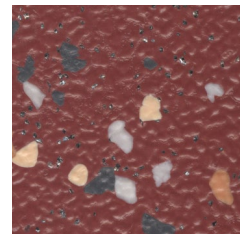
CANO - 08

Weathered Stone



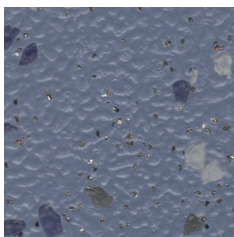
CANO - 15

Flipper



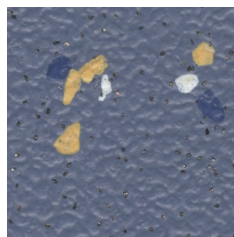
CANO - 06

Coral Rocks



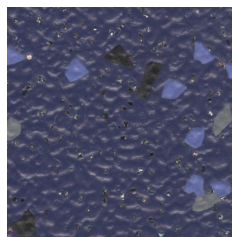
CANO - 11

Cornflower Blue



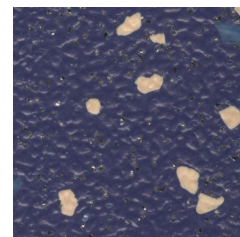
CANO - 12

River Silt



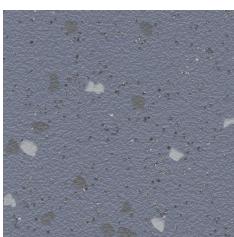
CANO - 13

Dynamic



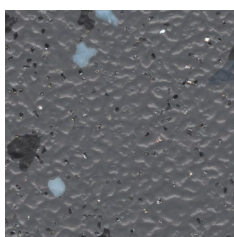
CANO - 14

Blue Clover



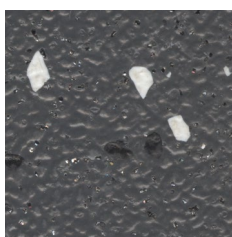
CANO - 10

Platinum Emboss  
Grey Wash



CANO - 09

Dense Fog



CANO - 16

Cool Grey

Matching welding rods are available for every colour.  
Printed shades may appear slightly different from actual samples.



Characteristics	Standards	Units	Canopus®
Phthalate Free			Yes
Indoor Air Quality	CA Section 01350 ( $\leq 0.5$ mg / m <sup>3</sup> )	Floorscore Certified (SCS - FS - 04547)	Yes
	ISO 16000-6, TVOC after 28 days	$\mu\text{g}/\text{m}^3$	< 10 (Fully compliant)
Description			
Type of floor covering	EN 13845   EN 13553	Classification	Safety Vinyl Flooring
General Performance	ISO 10874 - EN 685		34: Very Heavy Commercial 43: Heavy Light Industrial
Usage / Wear Resistance	BS EN 649	Group	T ( $\leq 2$ mm <sup>3</sup> )
Special Treatment			Anti-slip surface with silicon carbide granules. SureClean™
Overall Thickness	ISO 24346 - EN 428	mm	2.00
Weight	ISO 23997 - EN 430	g/m <sup>2</sup>	3400
Sheet Size	ISO 24341 - EN 426	m (width)	2
		m (length)	20
		m <sup>2</sup> (surface area)	40
Castor chair test	ISO 4918 - EN 425	Type of use	Continuous
Slip resistance	EN 13845	Wear Resistance Rating	ESf & ESb ( $\leq 10\%$ particles lost over 50,000 cycles)
	DIN 51130	Ramp Test	R 11
	BS 7976 - 2	Wet Pendulum Test	36+ (Low Slip Potential)
	AS 4586 - 2013 Appenix A		P4
	EN 13893 ASTM D2047	Coefficient of friction	DS (< 0.30) Pass (0.70 Avg)
Dimensional stability	ISO 23999 - EN 434	%	$\leq 0.40$
Flexibility	ISO 24344 - EN 435	20mm mandrel	< 20
Seam Strength	ISO 16906	N/50mm	Pass
Residual indentation	ISO 24343 - 1 - EN 433	mm	$\leq 0.10$
	ASTM F970	psi	800
Colour fastness to light	EN ISO 105 - B02	Degrees	$\geq 6$
	ASTM F1515	$\Delta E \leq 800$ after 300 hours (colour change)	Pass
Static electrical propensity	EN 1815	kV	< 2.0
Thermal resistance	EN 12667	m <sup>2</sup> k/W	Approx 0.01 m <sup>2</sup> k/W (suitable at 27°C)
Heat Stability	ASTM 1514	$\Delta E \leq 0.80$ (colour change)	Pass
Reaction to fire	EN ISO 9239-1	kW/m <sup>2</sup>	$\geq 8$
	EN ISO 11925-2		Pass
	EN 13501-1 : 2007+A1	Class	Bfl - S1
	ASTM E 648	Type	1
Smoke density	ASTM E 662	Dm	< 450
Stain & chemical resistance	ISO 26987 - EN 423	Index	0 (Excellent resistance)
Maritime usage	IMO RES A 653 (16)		Annex 1 Part 2 (Smoke & Toxicity)
	IMO MSC 61 (67)		Part 5 ( Spread of Flame) and Annexure 2
	Marine Equipment Directive		1121

