



RESPONSIVE

We listen. We're responsive.

Vega Plus®

Homogeneous: Directional

2019

Special Features



CERTIFIED BY SCS Global Services

Applications

- Hospitals & Clinics
- Reception areas
- Waiting rooms
- Auditoriums
- Schools & Classrooms
- Supermarkets
- Kindergartens
- Laboratories
- Dormitories

Product Description

Vega Plus® is a Phthalate free, fully flexible homogeneous, directional floor covering with a classic design incorporated throughout the entire 2.00mm / 3.00mm thickness of the product.

Vega Plus® is treated with RQ Protect process providing a high level of durability and acting as a barrier against stains and chemical aggression. RQ Protect completely replaces the application of wax or polish during the lifetime of the product.

Vega Plus® is VOC compliant ($\leq 1/2$ Chronic REL) and formaldehyde compliant ($\leq 9.0 \mu\text{g}/\text{m}^3$) according to the CDPH/EHLB/Standard, Method V1.1-2010 (certificate 120316-01).

Vega Plus®

Homogeneous: Directional - Phthalate Free



The Workhorse

Intended for use in the toughest and most demanding environments, Vega Plus® is the preferred choice for professionals looking for durability and performance. With completely revamped colours and upgraded stain, chemical, scratch and scuff resistance, the floor retains its lustre throughout its lifetime.



4699-597-4

Benji Moore



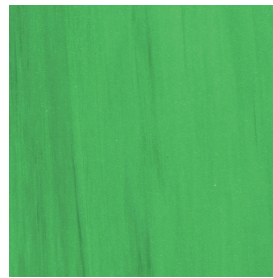
4699-571-4

Ivory



4699-592-4

Chardonnay



4699-587-4

Mint



4699-594-4

Red Sand



4699-575-4

Platinum



4699-586-4

Azure



4699-574-4

Blue Path



4699-576-4

Gun Metal

Vega Plus®

Homogeneous: Directional - Phthalate Free

ISO 9001 | 14001 | 18001

Characteristics	Standards	Units	Vega Plus®	
Indoor Air Quality	CA Section 01350 ($\leq 0.5 \text{ mg / m}^3$)	Floorscore Certified (SCS - FS - 04547)	Yes	
	ISO 16000-6, TVOC after 28 days	$\mu\text{g/m}^3$	< 10 (Fully compliant)	
Description				
Type of floor covering	ISO 10581	Type 1 - Binder Content	Homogeneous vinyl flooring (Directional)	
General performance	ISO 10874 - EN 685	Classification	34: Very Heavy Commercial 43: Heavy Light Industrial	
Usage / Wear Resistance	BS EN 649	Group P	Heavy foot traffic / Heavy duty	
Special treatment			PUR: Polyurethane treatment	
Overall thickness	ISO 24346 - EN 428	mm	2.00	3.00
Thickness of wear layer	ISO 24340 - EN 429, ASTM F410	mm	2.00	3.00
Weight	ISO 23997 - EN 430	g/m^2	3400	5100
Sheet size	ISO 24341 - EN 426	m (width)	2	
		m (length)	20	
		m^2 (surface area)	40	
Abrasion resistance	EN 660 - 2	Group	P	
	EN 660 -2	Volume loss mm^3	< 4	
	ASTM D3389 (weight loss / 1000 cycles)	g	< 0.40	
Castor chair test	ISO 4918 - EN 425	Type of use	Continuous	
Slip resistance	DIN 51130	Ramp Test	R 9	
	EN 13893 ASTM D2047	Coefficient of friction	DS (> 0.30) Pass (0.70 avg)	
Dimensional stability	ISO 23999 - EN 434	%	≤ 0.40	
Flexibility	ISO 24344 - EN 435	20mm mandrel	No Cracking	
	ASTM F137		Pass	
Seam Strength	ISO 16906	N/50mm	Pass	
Residual indentation	ISO 24343 - 1 - EN 433	mm	≤ 0.10	
	ASTM F970	psi	800	
	ASTM F1914	inches	Avg. 0.001	
Colour fastness to light	EN ISO 105 - B02	Degrees	≥ 6	
	ASTM F1515	$\Delta E \leq 8$ after 300 hours (colour change)	Pass	
Static electrical propensity	EN 1815	kV	< 2.0	
Thermal resistance	EN 12667	$\text{m}^2 \text{ k/W}$	Approx $0.01 \text{ m}^2 \text{ k/W}$ (suitable at 27°C)	
Reaction to fire	EN ISO 9239-1	kW/m^2	≥ 8	
	EN ISO 11925-2		Pass	
	EN 13501-1 : 2007+A1	Class	Bfl - S1	
	ASTM E 648	Type	1	
Smoke density	ASTM E 662	Dm	< 450 (Pass)	
Stain & chemical resistance	ISO 26987 - EN 423	Index	0 (Excellent resistance)	
	ASTM F925	Resistance		
Maritime usage	IMO RES A 653 (16)		Annex 1 Part 2 (Smoke & Toxicity)	
	IMO MSC 61 (67)		Part 5 (Spread of Flame) and Annexure 2	
	Marine Equipment Directive		1121	

© All contents of this shade card are of the copyright of Responsive Industries Limited. Any duplication in any form without prior permission is strictly prohibited. The above data is also valid at the time of print. For more details regarding the technical specifications, handling and installation, please contact Responsive Industries Limited.



<p>EN 14041</p>	<p>VOC Emissions</p>	<p>Fire</p>
	<p>Electrical</p>	<p>Slip</p>